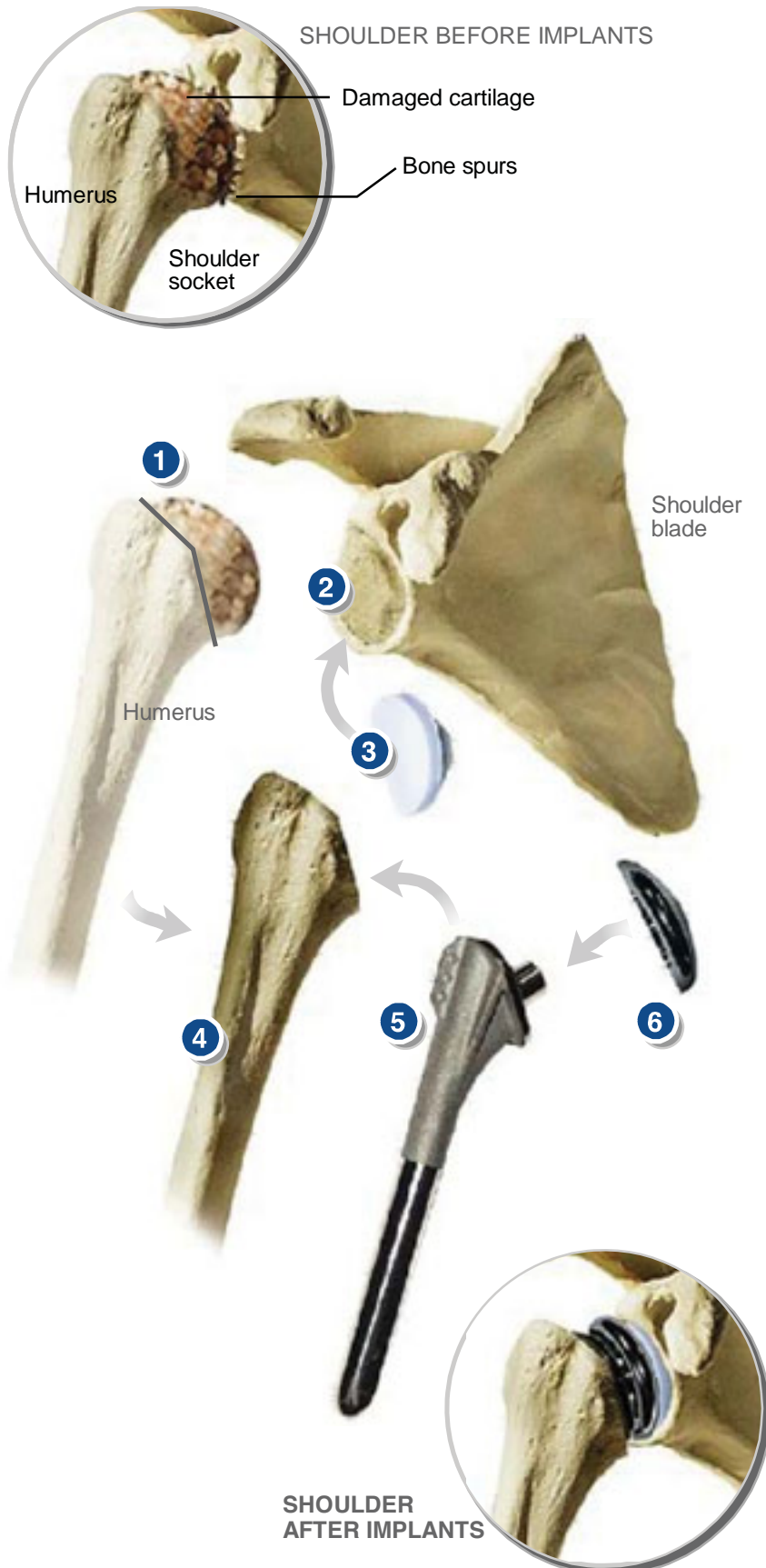


## TOTAL SHOULDER REPLACEMENT



### Overview

This surgery replaces the damaged or diseased head of the humerus (also called the ball) and cartilage from the shoulder joint with a metal and plastic joint.

### Humerus Head Removed

First, the surgeon removes the head of the humerus.

### Glenoid Reshaped

The surgeon then smooths and reshapes the shoulder socket (which is called the glenoid).

### Plastic Component Attached

The plastic glenoid component is pressed into place with bone cement.

### Bone Hollowed Out

The surgeon hollows out the upper portion of the humerus to receive the implant.

### Metal Stem Implanted

The metal stem is implanted in the humerus. It may be secured with bone cement.

### Metal Head Attached

A metal ball is placed onto the stem.

### End of Procedure

The surgeon joins the repaired humerus and glenoid components to form the new shoulder joint.