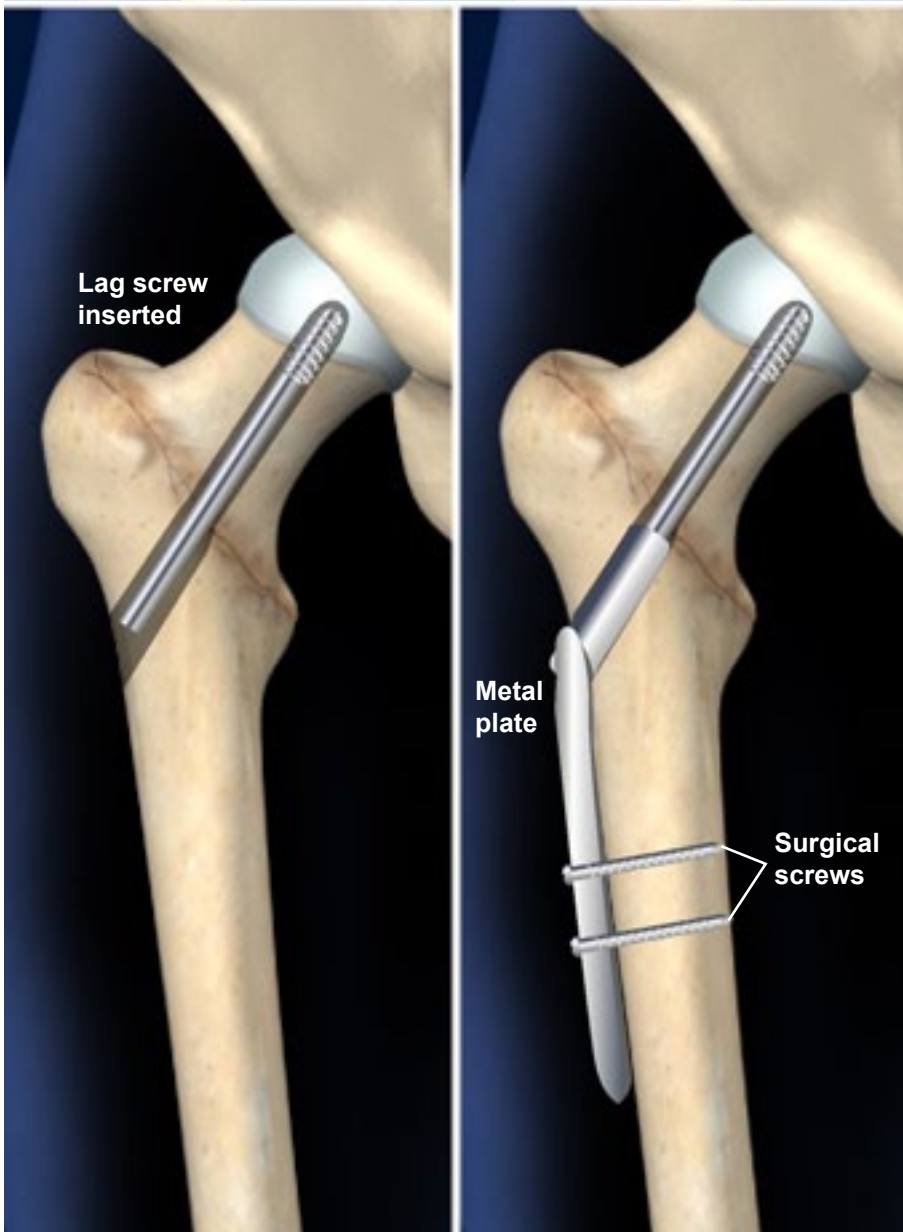
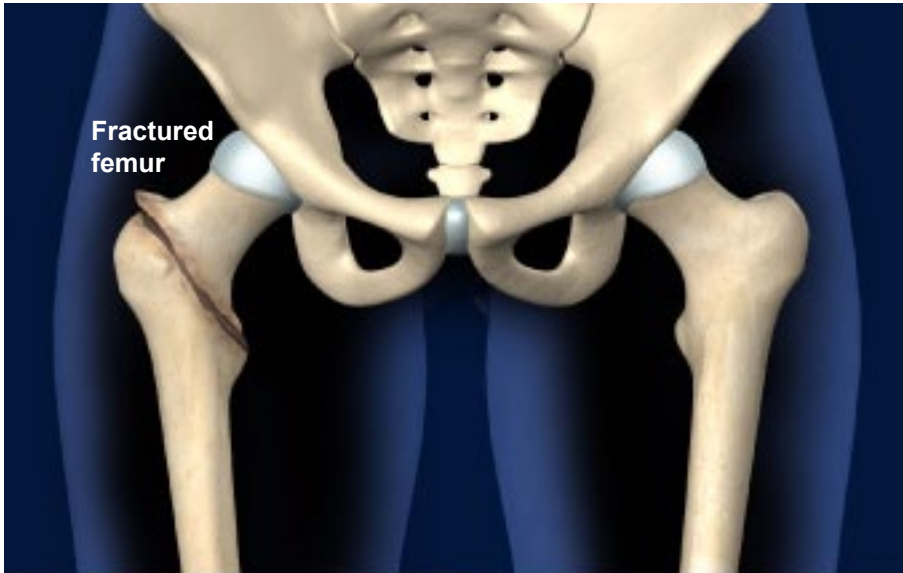


## FEMUR FRACTURE FIXATION WITH DYNAMIC HIP SCREW



### Overview

This surgical procedure uses a metal plate and screws to repair a fractured femur. It retains the femoral head, allowing for more natural movement of the hip joint.

### Preparation

The patient is positioned so that the side of the thigh is clearly visible to the physician, and the area is cleaned and sterilized. An IV is administered for general anesthesia.

### Accessing the Femur

An incision is made on the side of the hip to allow access to the side of the femur. If the fracture has caused part of the femoral head to shift, the bone is realigned.

### Repairing the Femur

A hole is drilled through the side of the femur and into the femoral head. A lag screw is inserted into the drilled hole. A metal plate is then placed over the lag screw and positioned against the femur. Surgical screws are inserted to hold the plate in place.

### End of Procedure

The incision is closed with sutures or surgical staples. A bandage is applied. A hospital stay of a few days is necessary, and patients will receive physical therapy. Many patients may be able to put full weight on the leg within 10 to 45 days after the procedure.